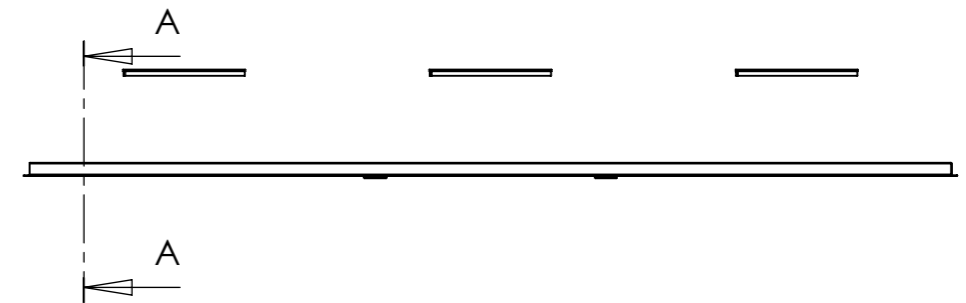
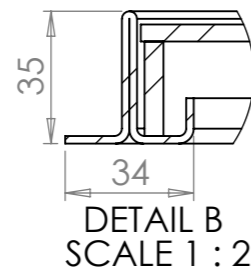
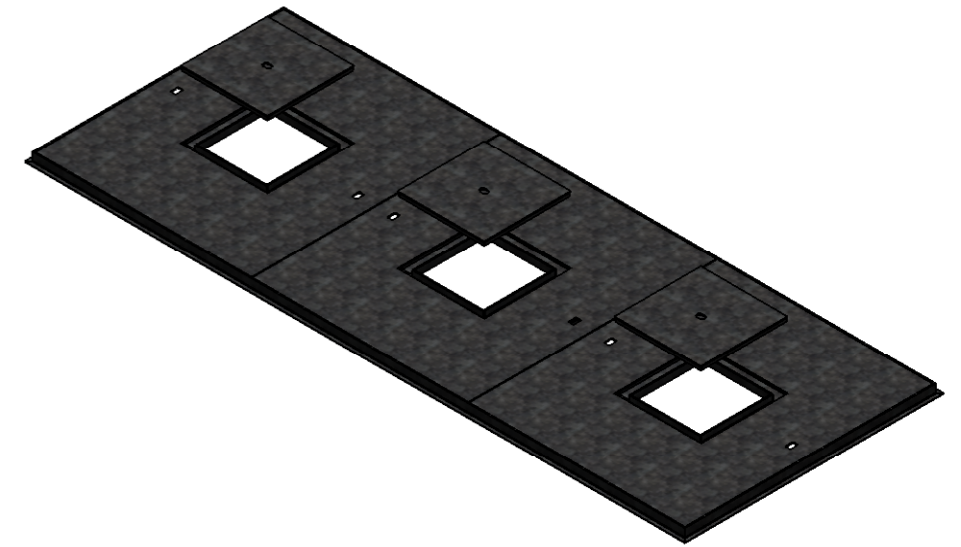
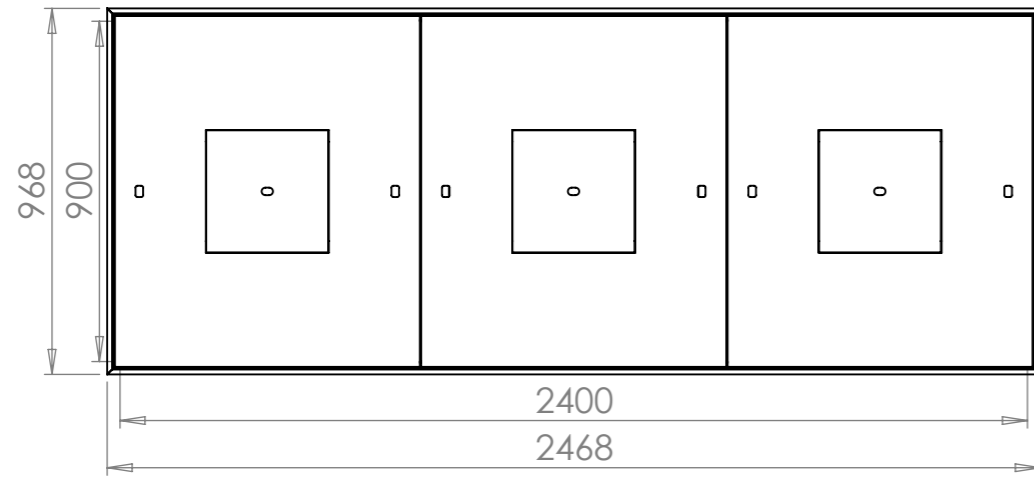


**DWG. NO.**

A539-240x90-Facta



Unit 3 Power Park, Towers Business Park, Rugeley, Staffs. WS15 1UZ  
 Telephone 01889 572620 Fax 01889 572629  
 Email sales@aquacastltd.com

Customer:



**A3**

Description: 2400x900 Solid Top Triple Peephole C&F

	Name	Date	Material:	Mild Steel
Drawn By:	Sandy Mcfie-Hyland	06/05/2009	Finish:	Galvanised Steel
Checked By:	Steve Hulse	06/05/2009	Loading:	Facta
Scale:	1:20		Weight(kg):	130.24