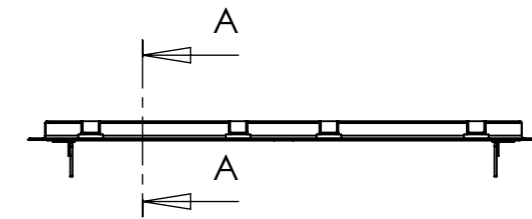
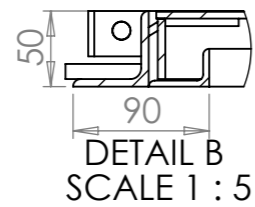
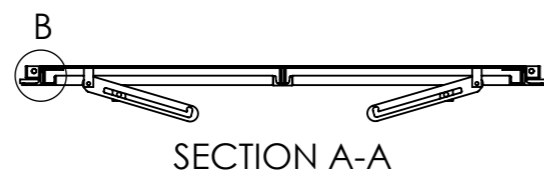
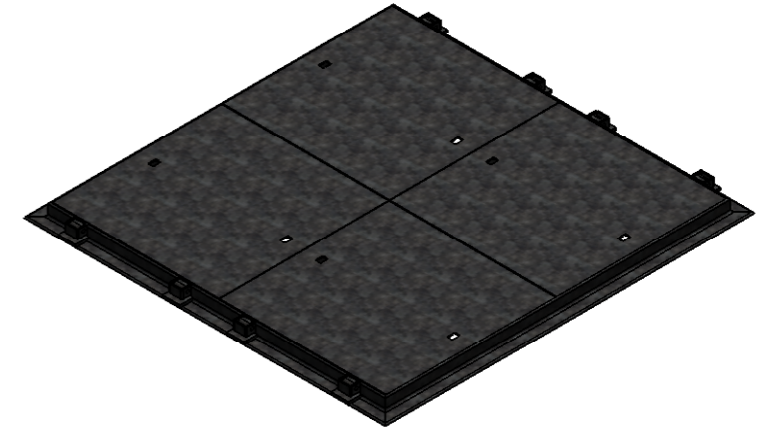
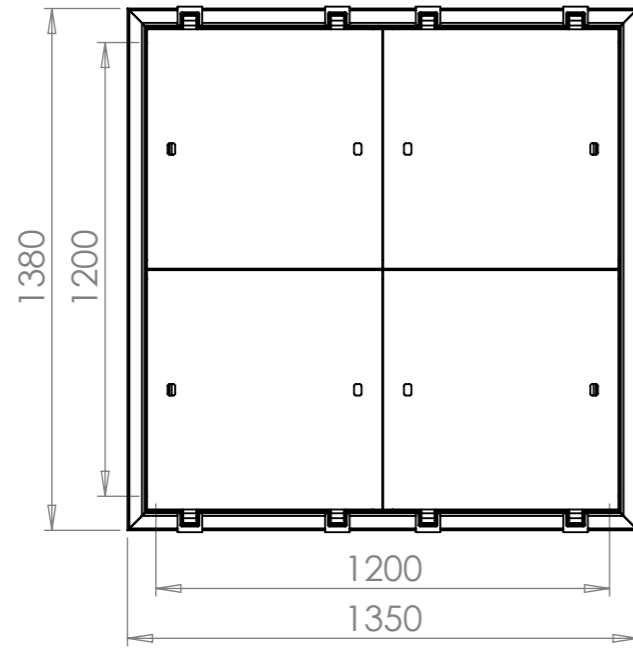


DWG. NO.

A091-120x120-Facta



Unit 3 Power Park, Towers Business Park, Rugeley, Staffs. WS15 1UZ
Telephone 01889 572620 Fax 01889 572629
Email sales@aquacastltd.com

Customer:



A3

Description: 1200x1200 Multiple Hinged C&F Facta

	Name	Date	Material:	Mild Steel
Drawn By:	Sandy Mcfie-Hyland	11/05/2009	Finish:	Galvanised Steel
Checked By:	Steve Hulse	11/05/2009	Loading:	Facta
Scale:	1:20		Weight(kg):	128.41